

Comparison of physiologic FDG PET uptake in CT-based vs PET-corrected organ contours in non-small cell lung cancer patients

Ojaswita Lokre, Amy J Weisman, Timothy G Perk

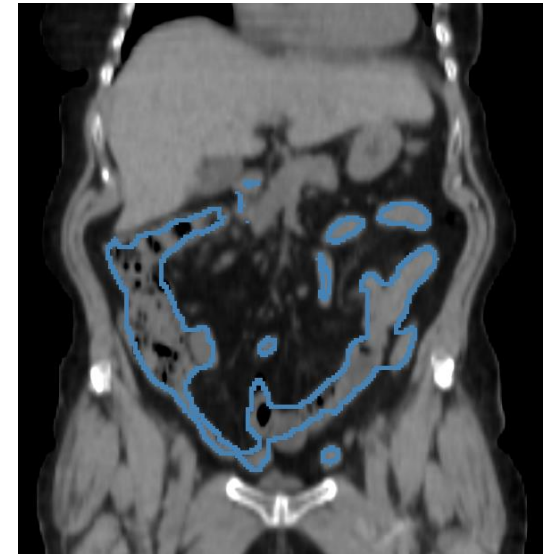


Disclosure: All authors are employed by AIQ Solutions.

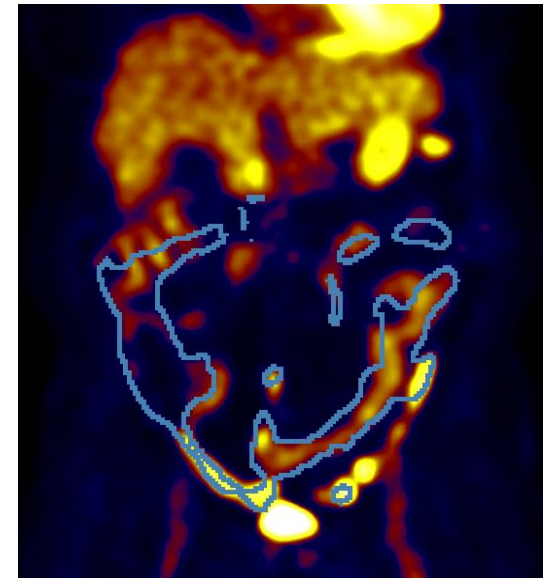
Background

- Quantifying functional activity of organs on PET/CT images may provide clinically meaningful information for patient management.
- This is **complex** to automate due to **spillover artifacts** and **patient motion**.

Segment on CT



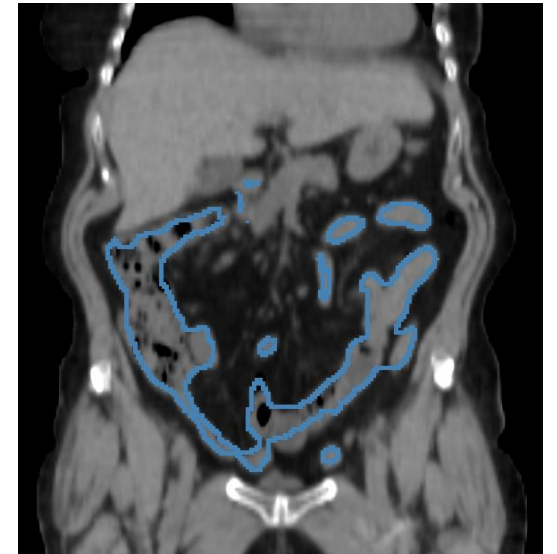
Quantify on PET



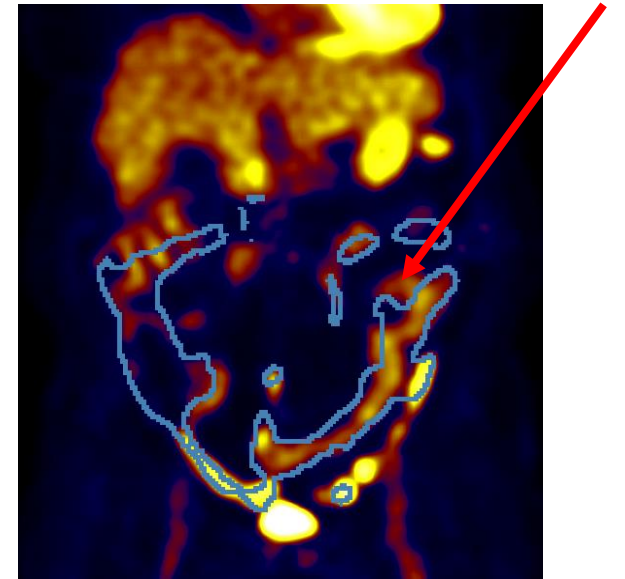
Background

- At AIQ solutions, we quantify organs to analyze patient toxicity, healthy tissue, disease spread and more.
- Here, we assess the differences in quantification between organ contours generated on the CT alone compared to those corrected for spillover on PET.

Segment on CT

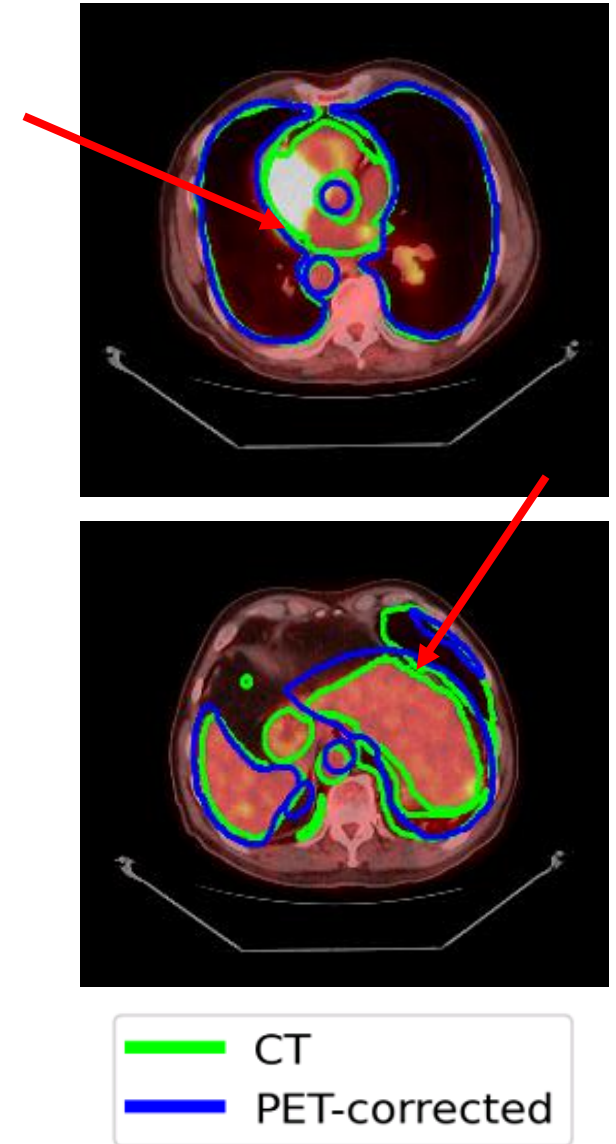


Quantify on PET



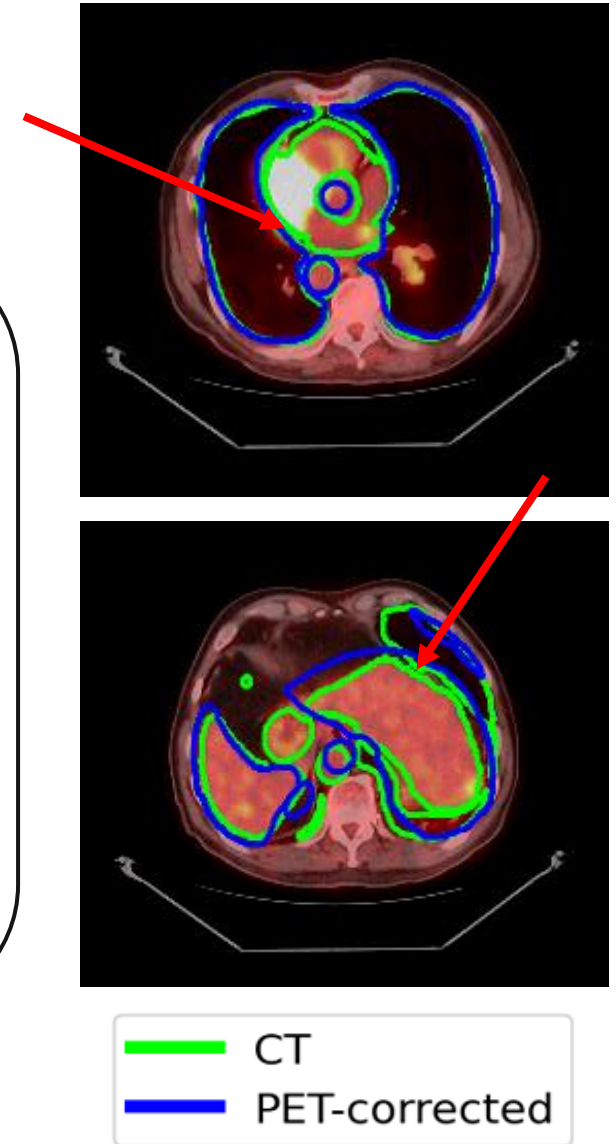
Patient Population

- FDG PET/CT images of 94 patients with non-small cell lung cancer were gathered.
- Ten structures were manually contoured on the CT images;
(liver, spleen, thyroid, kidneys, pancreas, bladder, aorta, bowel, stomach and heart)
- After which the structure contours were manually corrected for spillover using the PET images.

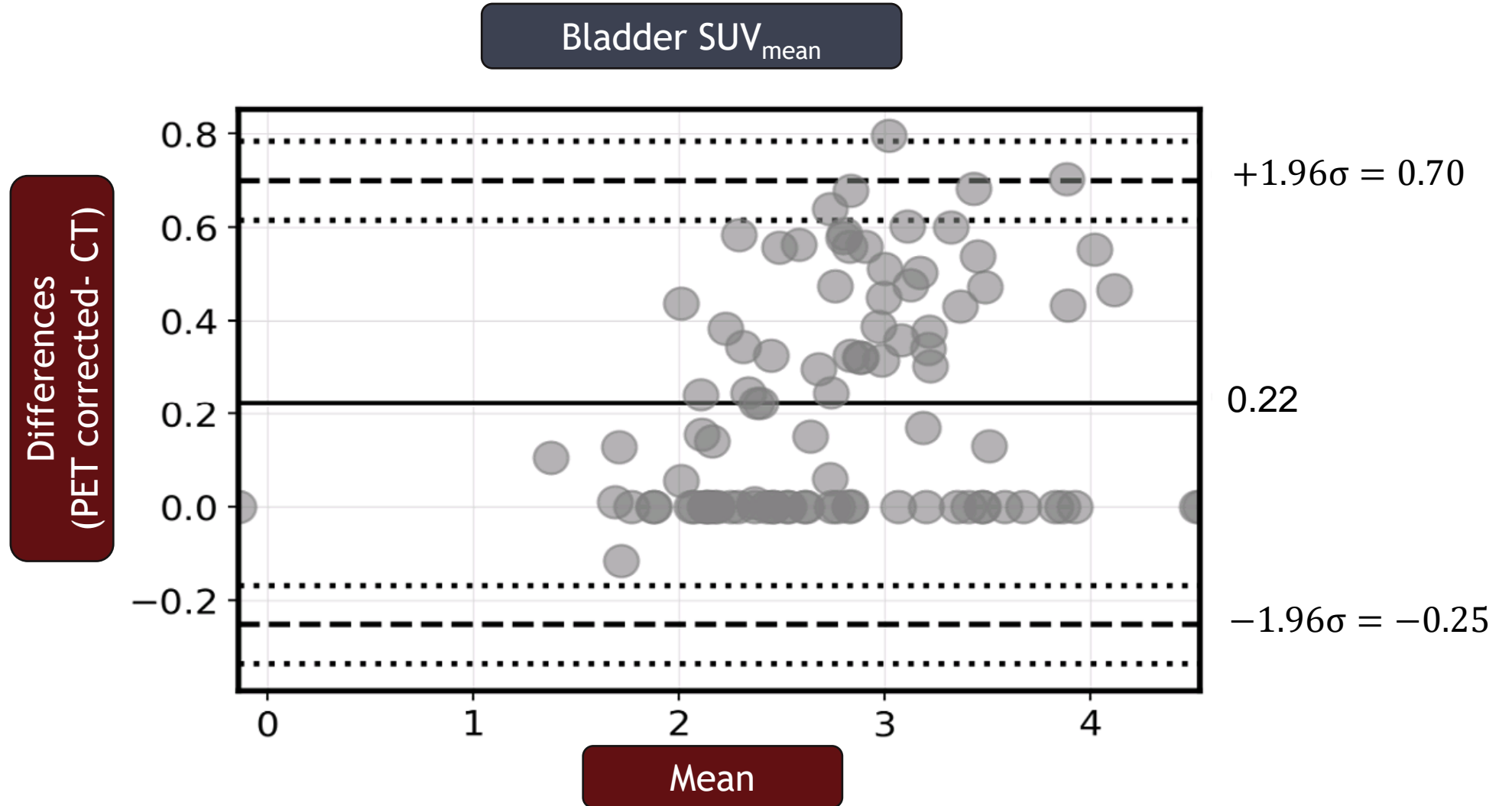


Evaluation Methods

- The following features were extracted from the images using both sets of contours:
 - SUV_{mean}
 - SUV_{max}
 - Volume
- The extracted features were then compared using **Pearson's correlation coefficient (R)** and **Bland-Altman's analysis of 95% limits of agreement (LOA)** on log-transformed data.



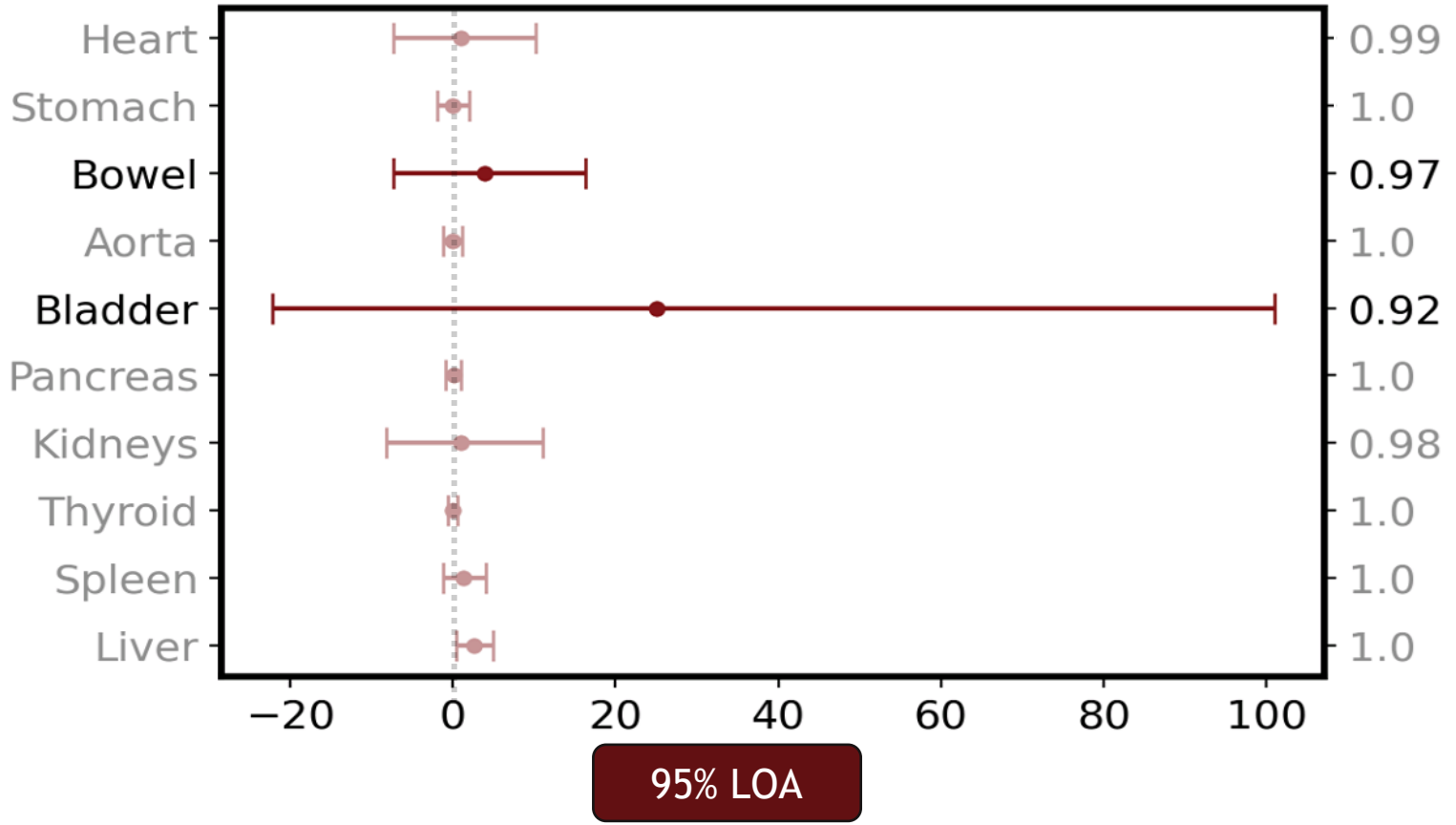
Results - Bland Altman Plot



Results - 95% Limits of Agreement (LOA)

SUV_{mean}

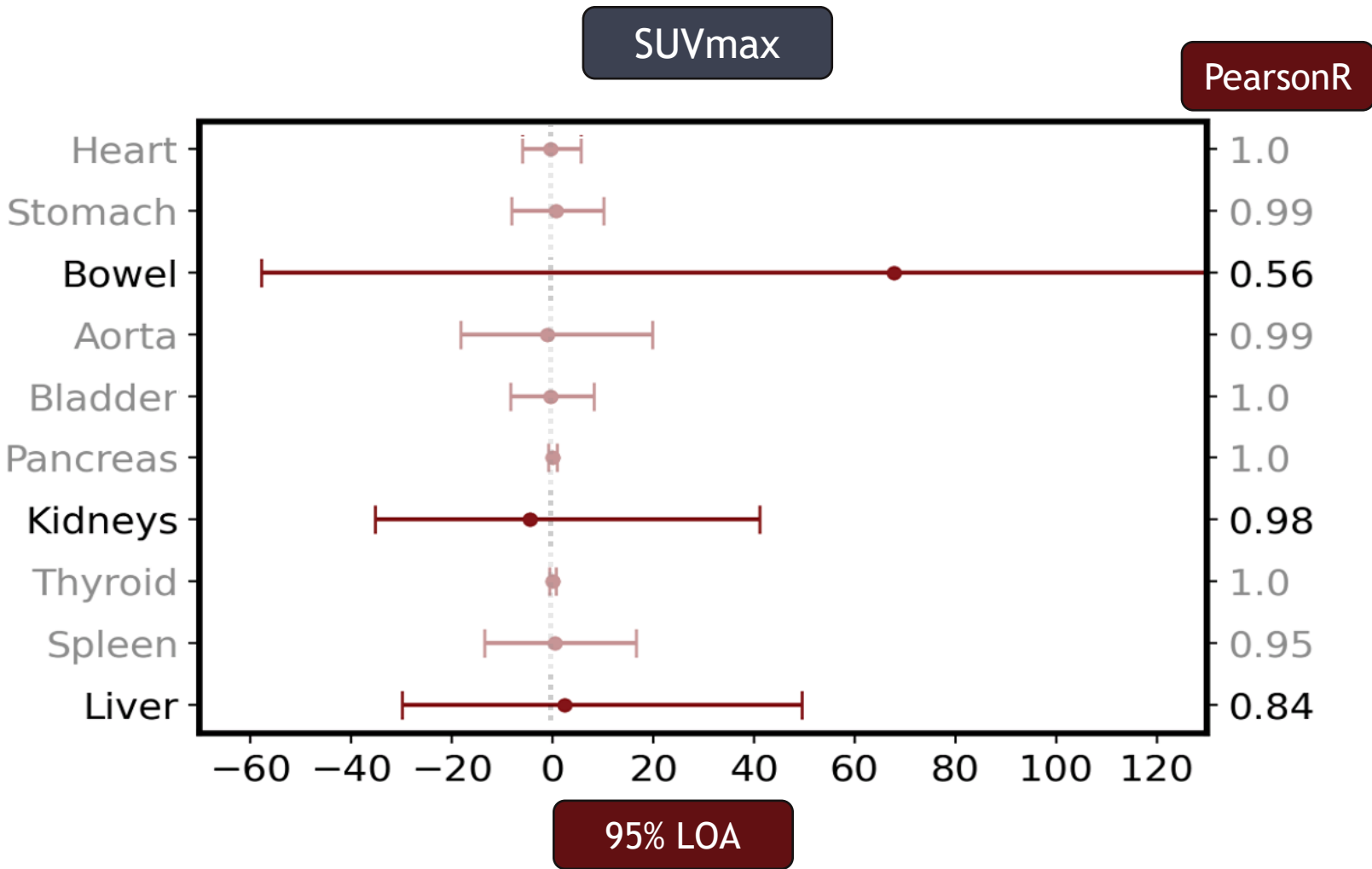
PearsonR



SUV_{mean} showed moderate changes in all structures and large changes in **bladder** and **bowel**.

95% LOA

Results - 95% Limits of Agreement (LOA)



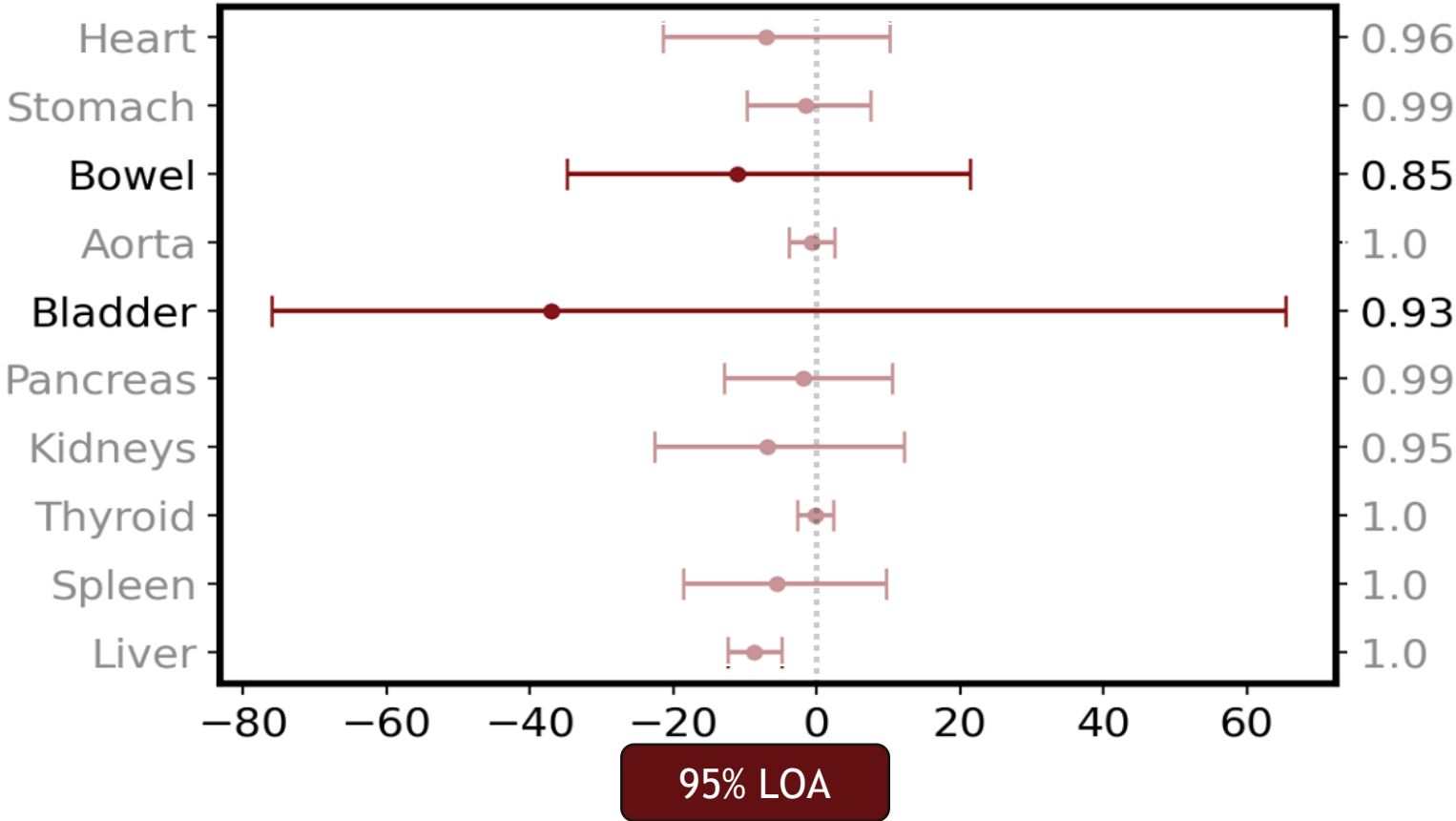
SUV_{max} showed a large impact on liver, kidneys and bowel.

*Bowel has been truncated from +570%

Results - 95% Limits of Agreement (LOA)

Volume

PearsonR



Volume showed moderate changes in **kidneys** and **heart**; substantial changes in **bowel** and **bladder**.

Summary

- PET correction impacted each organ and each feature differently, this could be explained by several factors:
 - Spillover
 - Patient motion
 - Partial Volume effects;
- For CT based contours, SUV_{mean} may be a more reliable measure compared to SUV_{max} .
- In the future if you want to use SUV_{max} , contouring with the PET and the CT together might be useful.